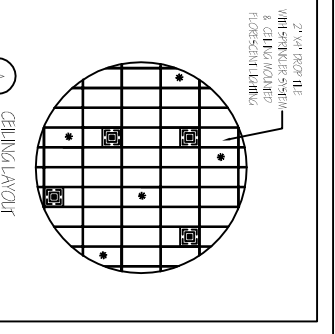


- GENERAL NOTES:
- 1) ALL ROOMS 5'-0" UNLESS OTHER WIRE NOTES.
 - 2) DIMENSIONS ARE FOR INTERIOR REFERENCE ONLY AND DO NOT REFLECT TOTAL SQUARE FOOTAGE.
 - 3) CEILING HEIGHTS VARY THROUGHOUT.
 - 4) CEILING HEIGHTS VARY FROM 10' TO 12' UNLESS OTHERWISE NOTED.
 - 5) CEILING HEIGHT TO DECKING 10'-7 1/2" / 8'11".
 - 6) BATHROOM CEILING HEIGHTS: 8'-9 1/2" / 8'11".



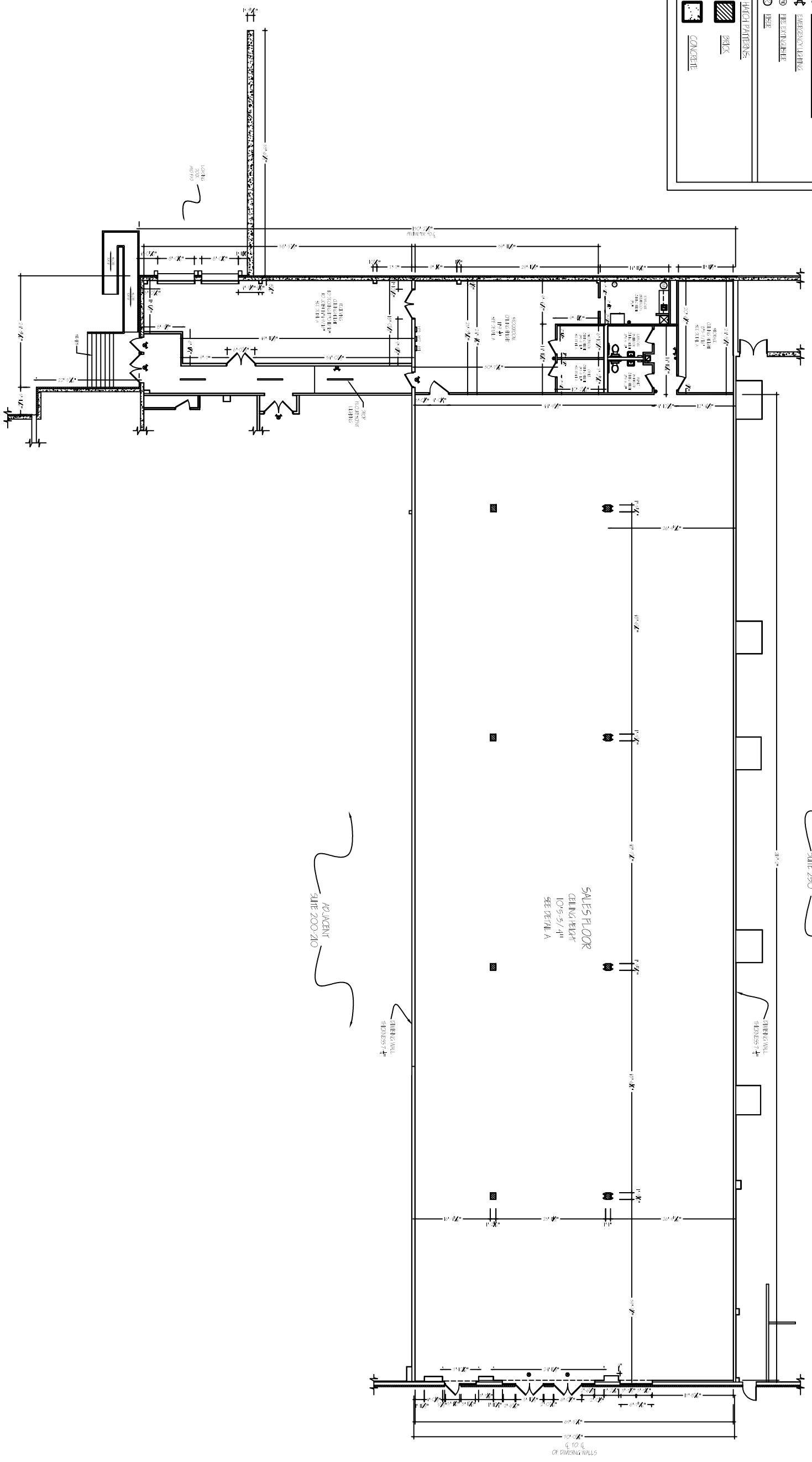
COMBINATION ELECTRICAL AND EMERGENCY POWER LIT NUMBER OF FIXTURES INDICATED. CEILING OR WALL MOUNTED.

EMERGENCY LIGHTING

RECYCLABLE

BRICK

CONCRETE



1 of 1 SHEETS
A-1
DATE: 6/7/2010
SCALE: 5/16" = 1"
JOB NO. 100000001
DESIGNER: MIMMS
CHECKED: MIMMS
DRAWN: MIMMS

FLOOR PLAN

ARCHITECTURAL ILLUSTRATION & DESIGN
307 TREE CORNERS PARKWAY
NORCROSS, GA 30092
770-567-7559 rencore2003@yahoo.com

ROSWELL TOWN CENTER
SUITE 220 (CURRENTLY TUESDAY MORNING)
608 HOLCOMB BRIDGE ROAD
ROSWELL, GA 30067

MALON D MIMMS CO
85-A MILL ST.
ROSWELL, GA 30075
770-518-1100

